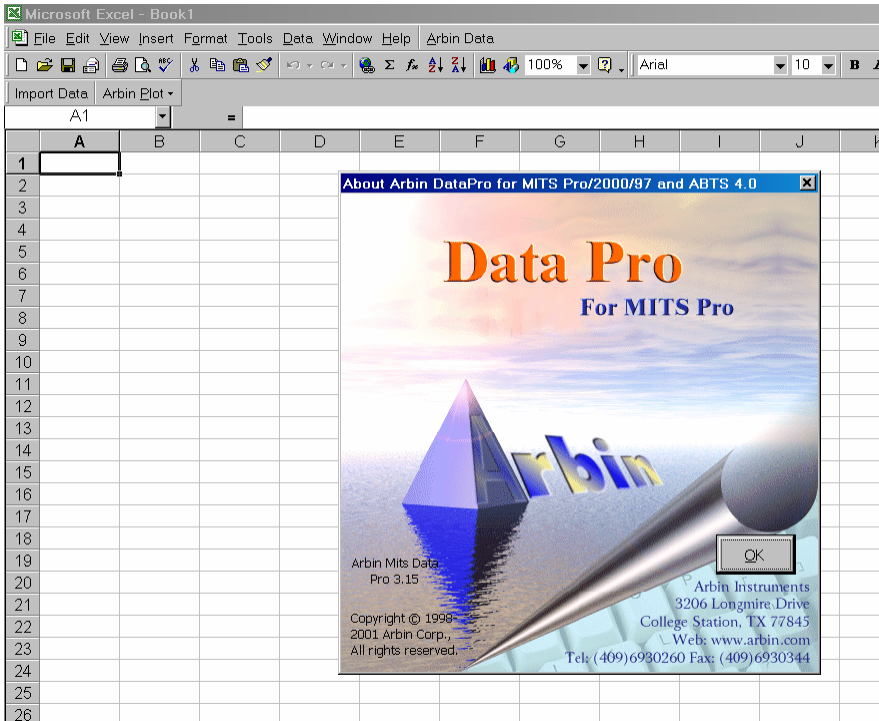
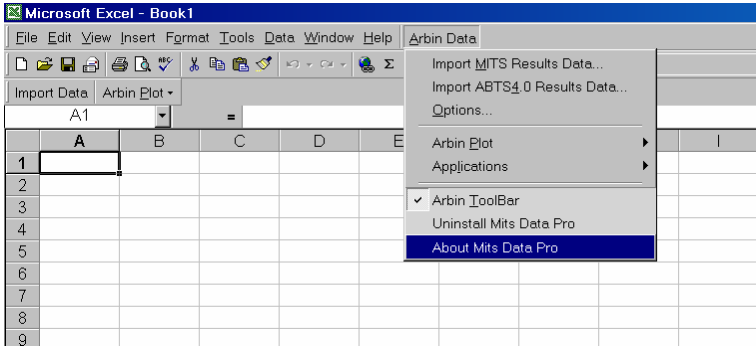
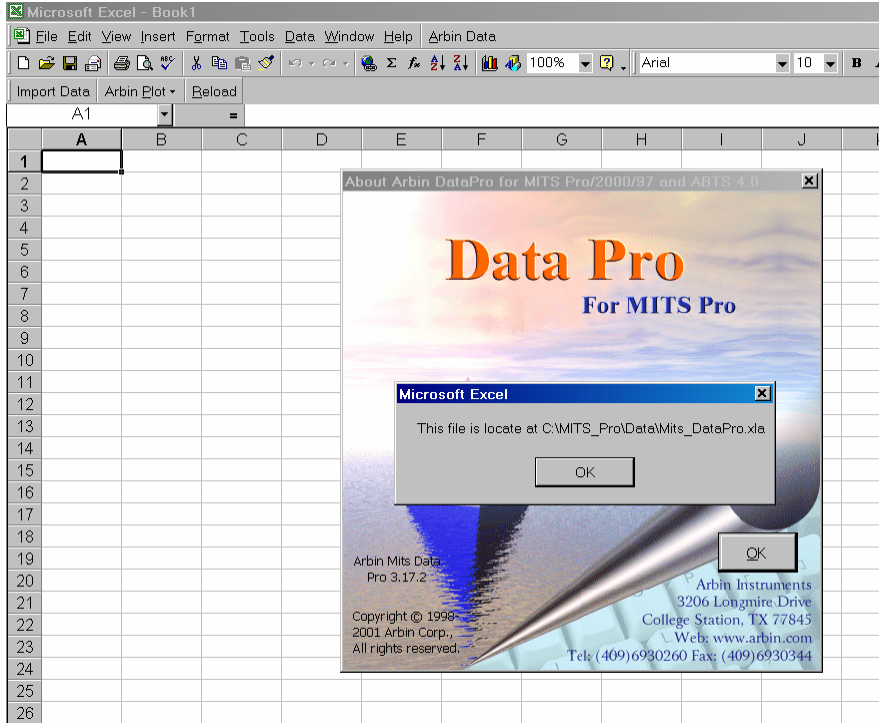


Procedure to Update MITS Data Pro version

If the MITS Data Pro Macro is already installed you will have an Arbin Data Button in MS Excel.

Determine where the macro is installed by going to <Arbin Data><About MITS Data Pro>. The version will appear in a dialog box.





Once the dialog box is displayed, place your cursor on the version number and single left click. This will display the full path of the installed macro.

Close Excel.

Overwrite the existing file with the new file.

Reopen Excel and determine that your macro has been updated to the new version.